

FR1200

FR1200, a fingerprint reader with RS485 communication interface works with biometric access controllers and fingerprint standalone access control, including inBIO series controllers, F8 and so on. It offers the function of capturing and transferring fingerprint samples to access control panel. With its IP65 rated rugged structure, FR1200 offers extra durability in all weather conditions including outdoor environments.



Specifications

CPU

324MHz

Sensor

ZK small-sized sensor

Communication

RS485

Standard Function

ID Card Module

Optional Function

IC Card Module

Voice Prompt

Buzzer

Working Voltage

12VDC

Working Temperature

0°C ~ 45°C

Protection Grade

IP65

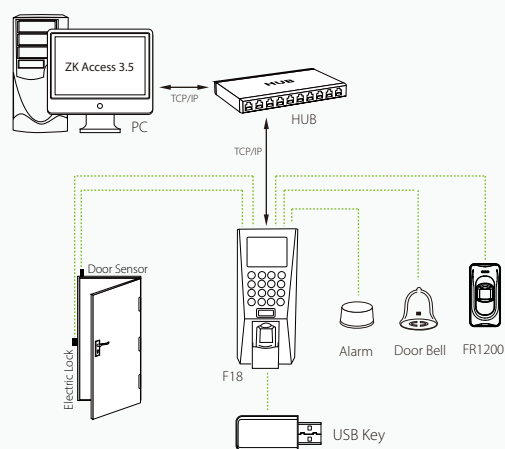
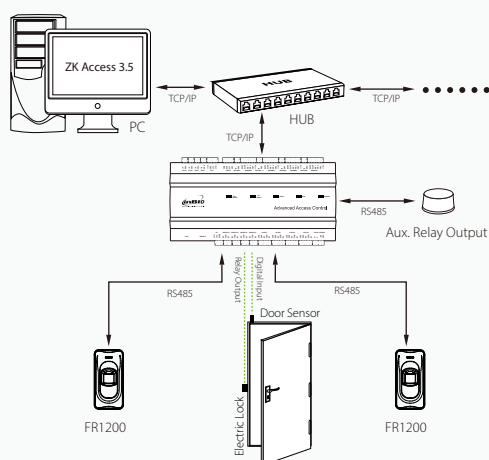
Size

Height: 102mm

Width: 50mm

Depth: 37mm

Configuration



Accessories

Overview

The Rainshield protects your device from harsh weather and sunlight tarnishing the outer materials. The Rainshields and backboxes are made from mild steel and powder coated with black but the powder coating color can be changed on request.

The Backbox fits inside the rainshield and allows for neat and adequate cable management.



FR1200 RAINSHIELD



FR1200 BACKBOX